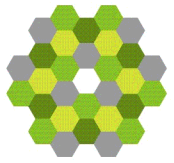
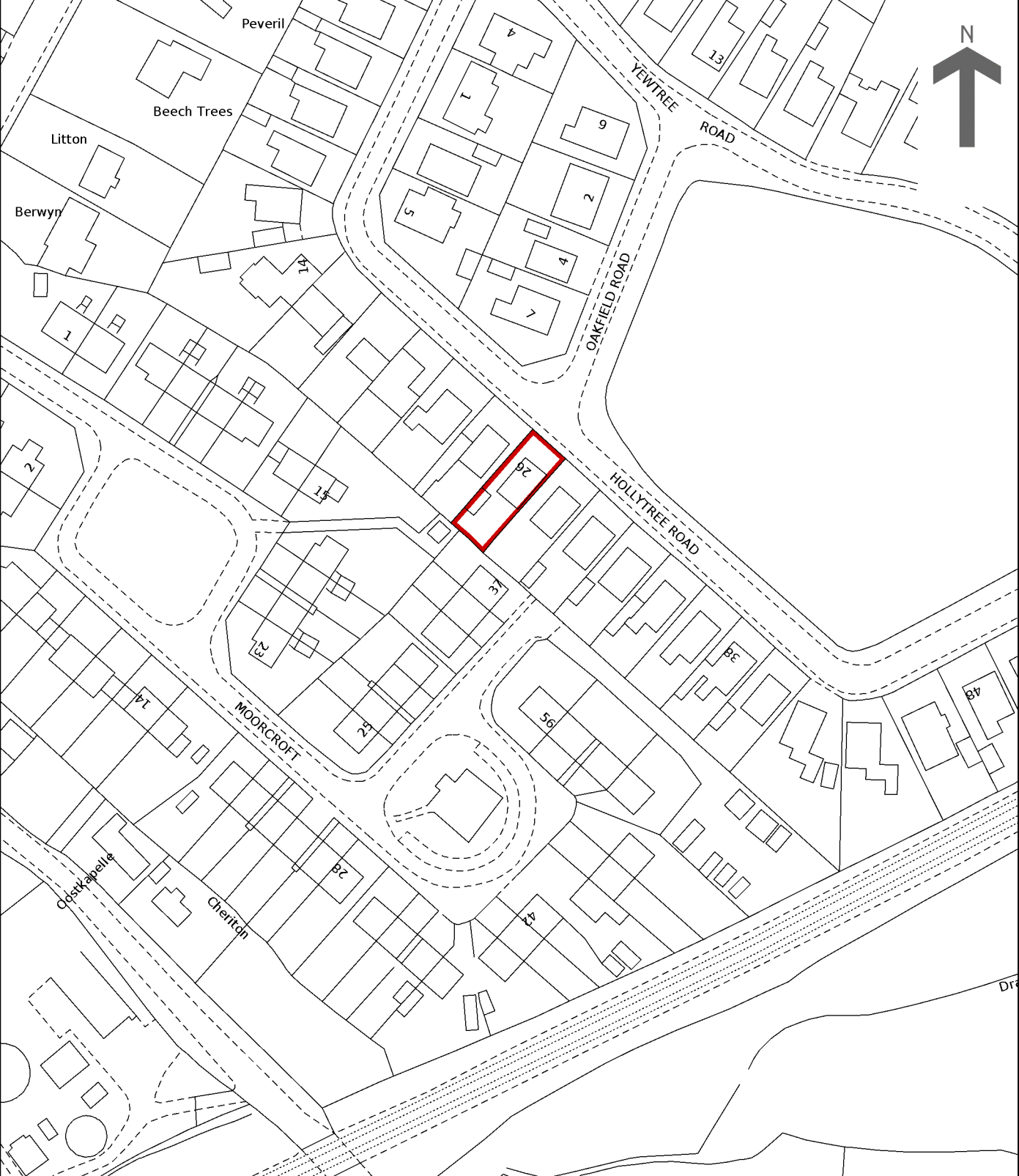


# HM Land Registry Current title plan

Title number **CH685699**  
Ordnance Survey map reference **SJ7175SE**  
Scale **1:1250 enlarged from 1:2500**  
Administrative area **Cheshire East**



© Crown copyright and database rights 2019 Ordnance Survey 100026316. You are not permitted to copy, sub-license, distribute or sell any of this data to third parties in any form.



This is a print of the view of the title plan obtained from HM Land Registry showing the state of the title plan on 03 September 2021 at 09:17:38. This title plan shows the general position, not the exact line, of the boundaries. It may be subject to distortions in scale. Measurements scaled from this plan may not match measurements between the same points on the ground.

This title is dealt with by HM Land Registry, Birkenhead Office.